

ROAD INDEX

M.V. = MIDDLEFIELD VILLAGE

A ADAMS RD. D6 I
 J JOHNSON ST. (M.V.) B4
 R RIDGEWOOD DR. (M.V.) B4

B BRIDGE RD. D6-E6
 BLINDYSBURG RD. F1-F7
 BURTON WINDSOR RD. A2-B1
 BUTTON ST. (M.V.) B4
 K KENWOOD ST. (M.V.) B5
 KINSMAN RD. A4-F4
 S SHEDD RD. A7-E7
 S. STATE AVE. (M.V.) B4-B5
 SPERRY LN. (M.V.) B4
 SPRINGDALE AVE. (M.V.) B4
 STANDISH AVE. (M.V.) B4
 STATION RD. A1-A2
 SWINE CREEK RD. C6-F7
 SPRINGDALE AVE. (M.V.) B4

C CHIPMUNK LN. A5-A6
 CRESTWOOD DR. B4
 CLOVERDALE DR. B5
 CEDARWOOD CT. (M.V.) B4
 L LAKE AVE. (M.V.) B4-B5
 LINDA AVE. (M.V.) B4

D DURKEE RD. A1-B1
 M MADISON RD. D1-C7
 MAPLE AVE. (M.V.) B4
 MEADOW VIEW PL. A4-B4
 MILL ST. (M.V.) B4
 T THOMPSON AVE. (M.V.) C4

E HIGH ST. (M.V.) B4-C4
 ELMWOOD ST. M.V.
 N NAUVOO RD. B3-F3
 NEWCOMB RD. B5-B7
 N. STATE AVE. (M.V.) B4
 NORTH VIEW DR. (M.V.) B4
 U VALPLAST ST. (M.V.) B5

F GURIA RD. A1
 O OLD STATE RD. A1-D7
 OAKDALE (M.V.) B4
 W. HIGH ST. (M.V.) B4

G GROVE ST. (M.V.) B4
 H HAYES RD. E2-E7
 HILLCREST AVE. (M.V.) C4
 HOSMER RD. D7
 P PETERS RD. D2-F2
 PIERCE ST. (M.V.) B4

H HAYES RD. E2-E7
 HILLCREST AVE. (M.V.) C4
 HOSMER RD. D7
 P PETERS RD. D2-F2
 PIERCE ST. (M.V.) B4

H HAYES RD. E2-E7
 HILLCREST AVE. (M.V.) C4
 HOSMER RD. D7
 P PETERS RD. D2-F2
 PIERCE ST. (M.V.) B4

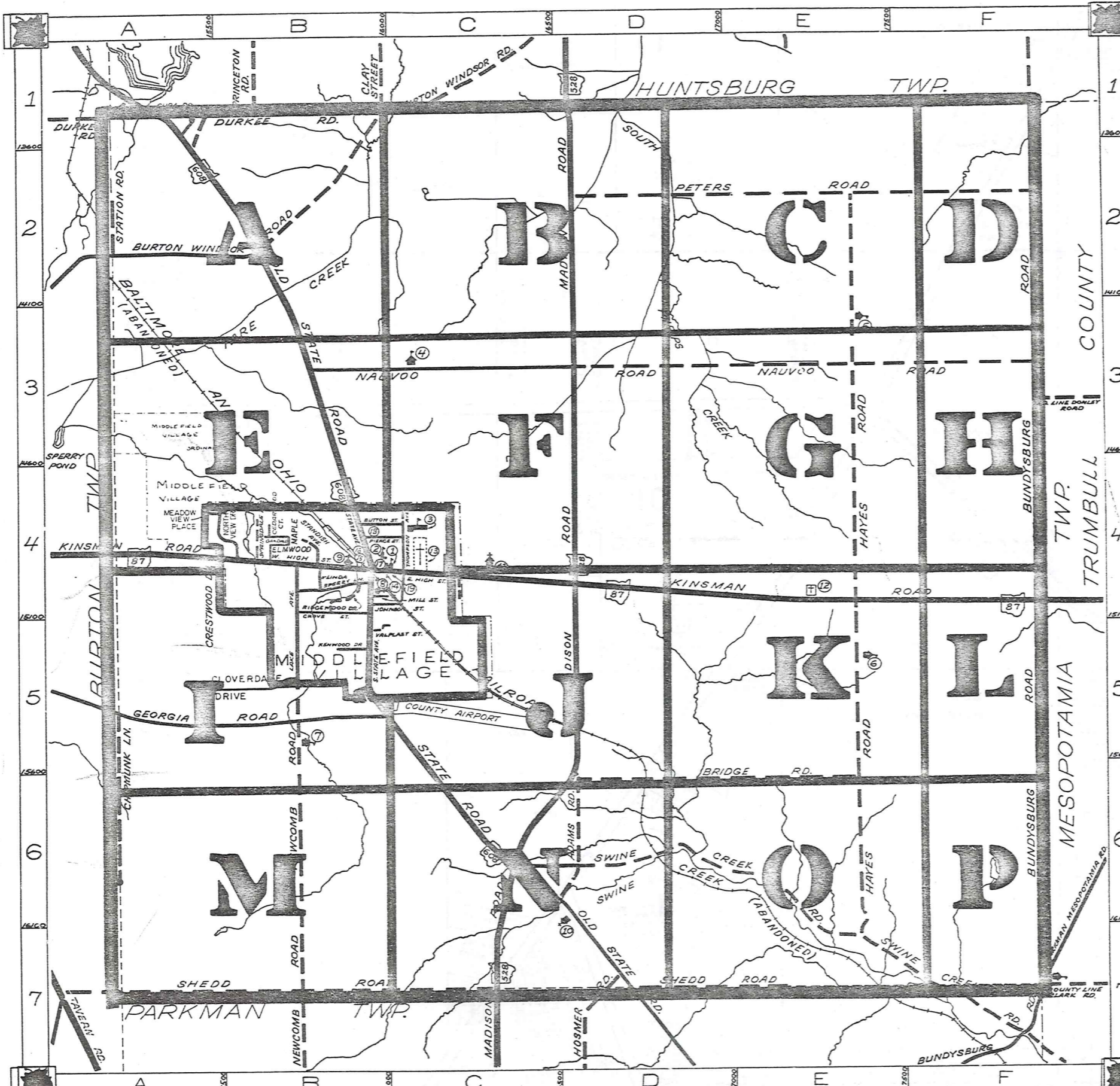
- ① CARDINAL JUNIOR HIGH SCHOOL
- ② MIDDLEFIELD ELEMENTARY SCHOOL
- ③ CARDINAL HIGH SCHOOL
- ④ AMISH SCHOOL
- ⑤ AMISH SCHOOL
- ⑥ AMISH SCHOOL
- ⑦ AMISH SCHOOL
- ⑧ THE FIRST METHODIST CHURCH
- ⑨ WESLEYAN METHODIST CHURCH
- ⑩ MENNONITE CHURCH
- ⑪ ST. LUCY'S CATHOLIC CHURCH
- ⑫ HAYES CORNERS CEMETERY
- ⑬ MIDDLEFIELD CEMETERY
- ⑭ UNITED STATES POST OFFICE
- ⑮ MIDDLEFIELD VOL. FIRE DEPT.
- ⑯ MIDDLEFIELD MUNICIPAL CENTER
- ⑰ MIDDLEFIELD PUBLIC LIBRARY
- ⑱ BETHESDA NURSING HOME
- ⑲ MIDDLEFIELD TOWN HALL

MIDDLEFIELD TOWNSHIP

SCALE: 1"=2000'

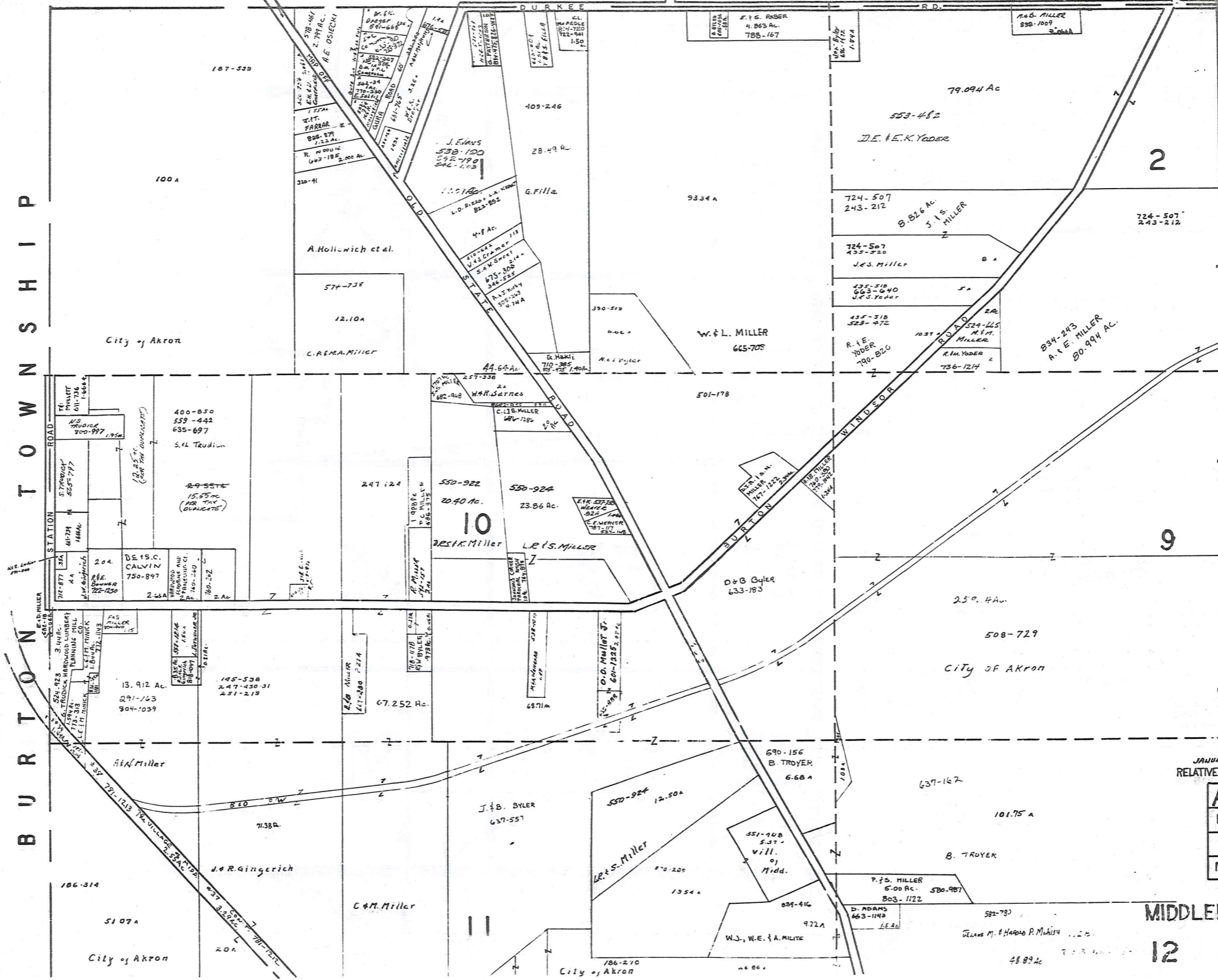
ROBERT L. PHILLIPS,
 GEauga COUNTY ENGINEER

- UNPAVED ROADS
- PAVED ROADS
- RAILROAD
- TOWNSHIP LINE
- COUNTY LINE
- VILLAGE LINE



HUNTSBURG TOWNSHIP

BURTON TOWNSHIP



* Inadequate Description

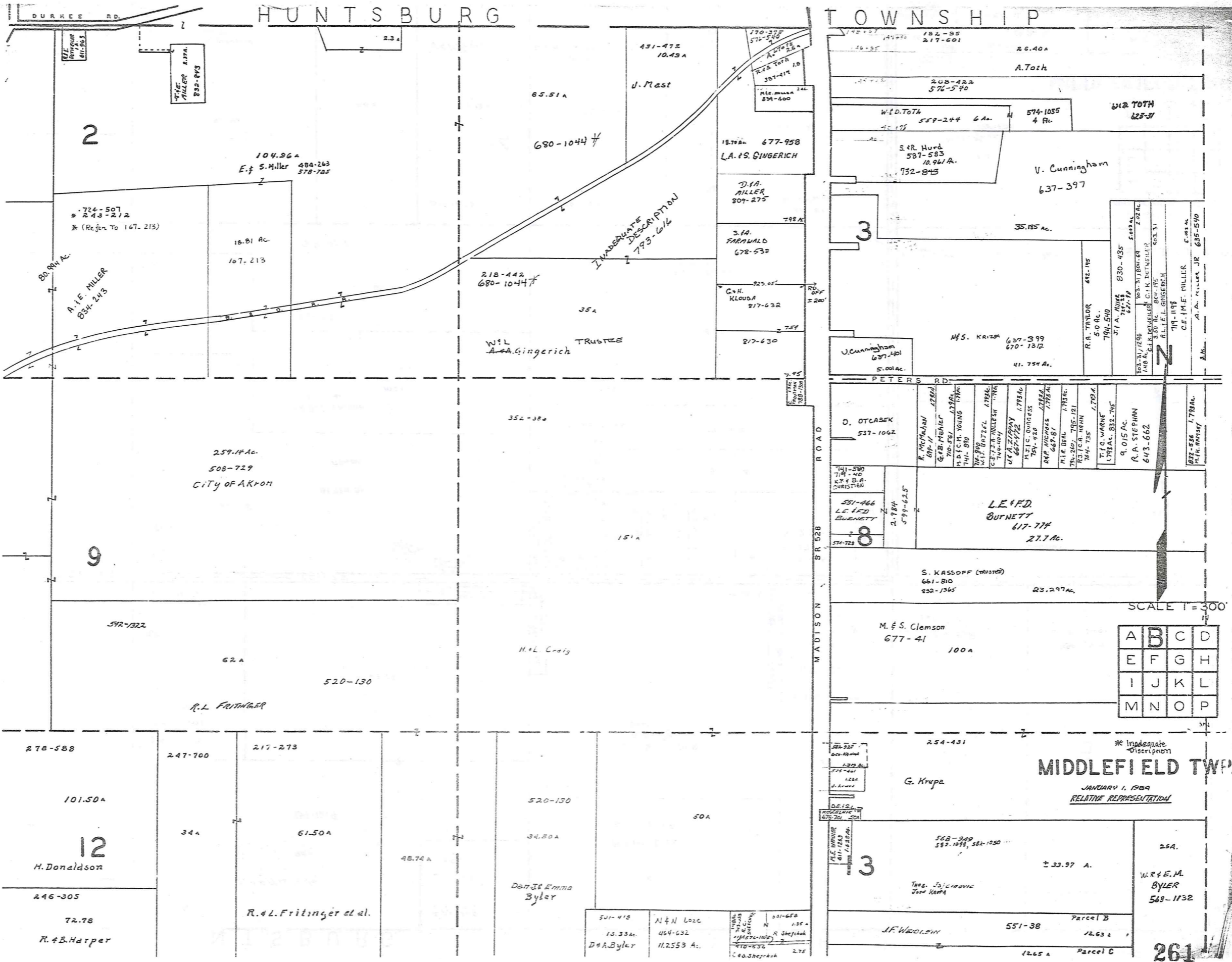
N

SCALE 1" = 100'

JANUARY 1, 1969
RELATIVE REPRESENTATION

A	B	C	D
E	F	G	H
I	J	K	L
M	N	O	P

MIDDLEFIELD TWP



HUNTSBURG

TOWNSHIP

DURKEE RD

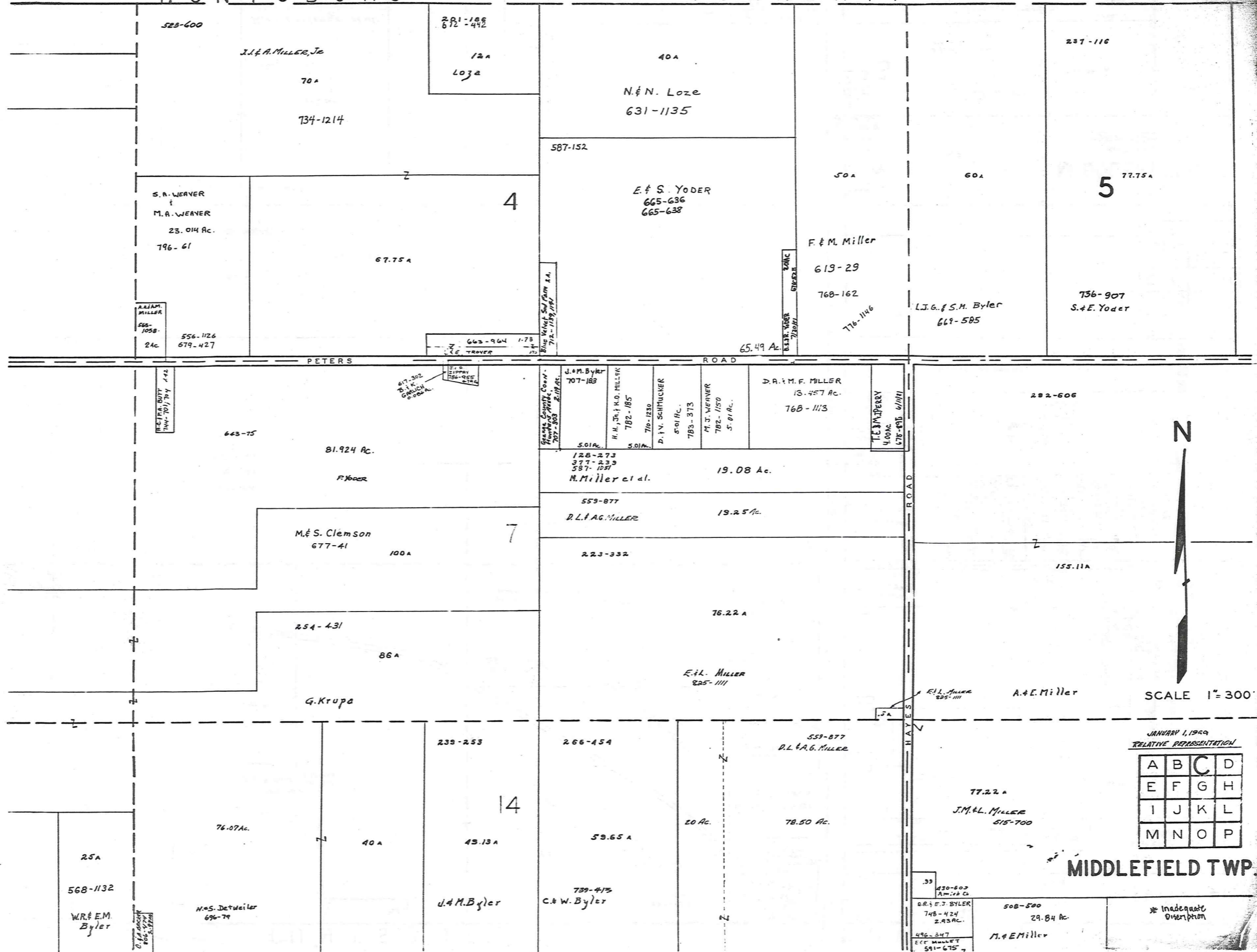
PETERS RD

MADISON SR 528

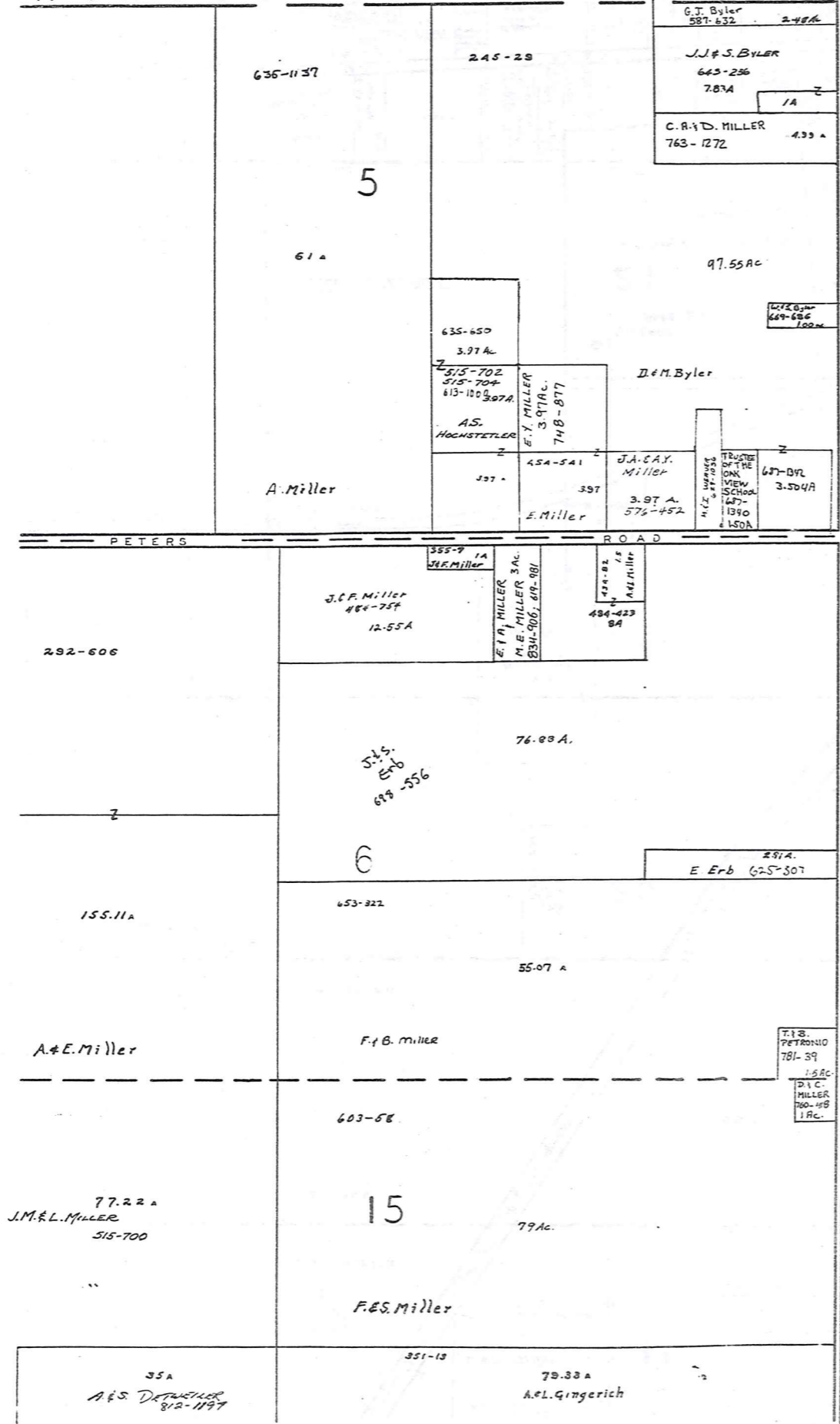
SCALE 1" = 300'

A	B	C	D
E	F	G	H
I	J	K	L
M	N	O	P

MIDDLEFIELD TWP.
JANUARY 1, 1989
RELATIVE REPRESENTATION



HUNTSBURG TOWNSHIP



BUNDYSBURG ROAD
COUNTY
TRUMBULL



SCALE 1" = 300'

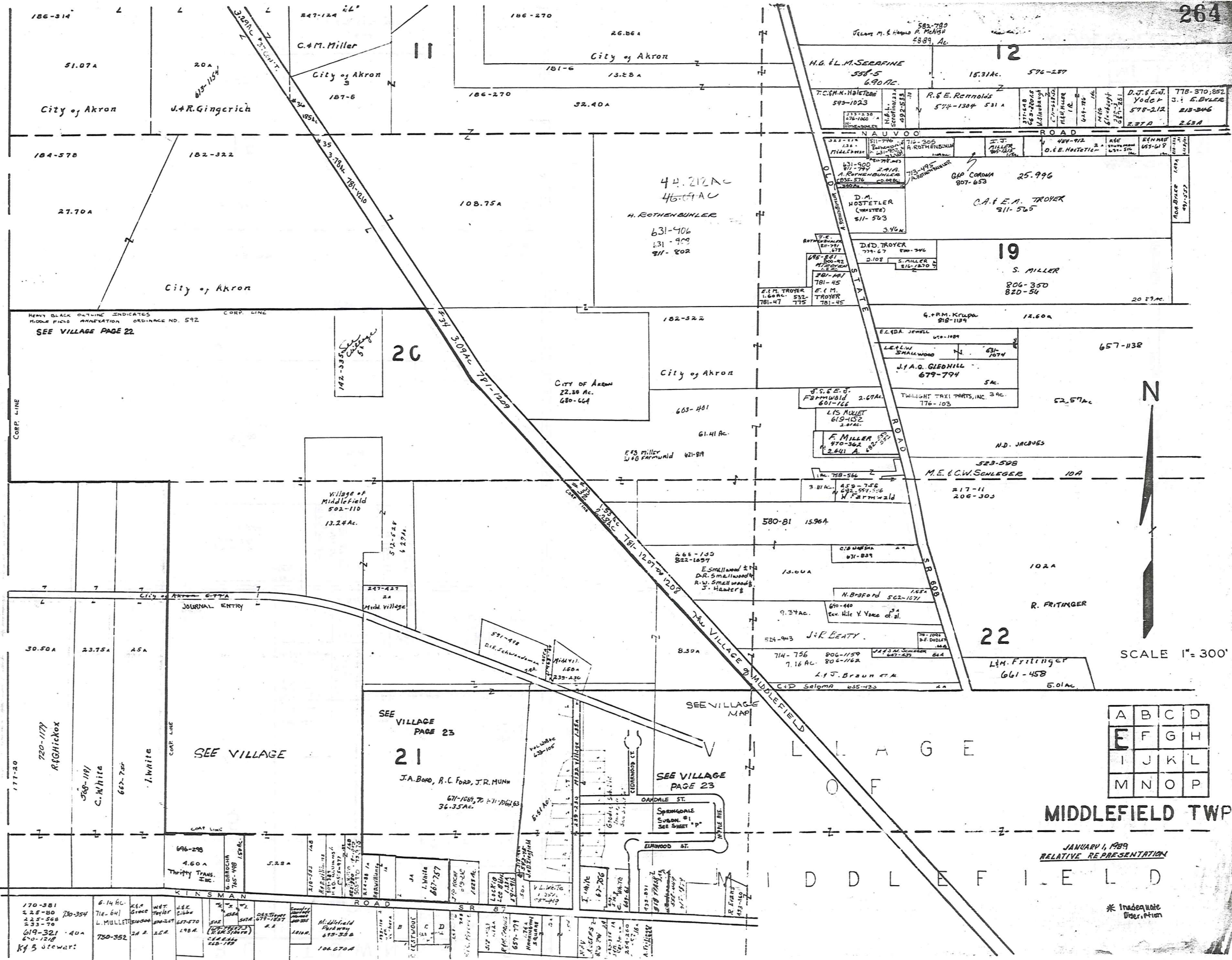
JANUARY 1, 1909
RELATIVE REPRESENTATION

A	B	C	D
E	F	G	H
I	J	K	L
M	N	O	P

* Inadequate Description

MIDDLEFIELD TWP.

BURTON TOWNSHIP



SCALE 1" = 300'

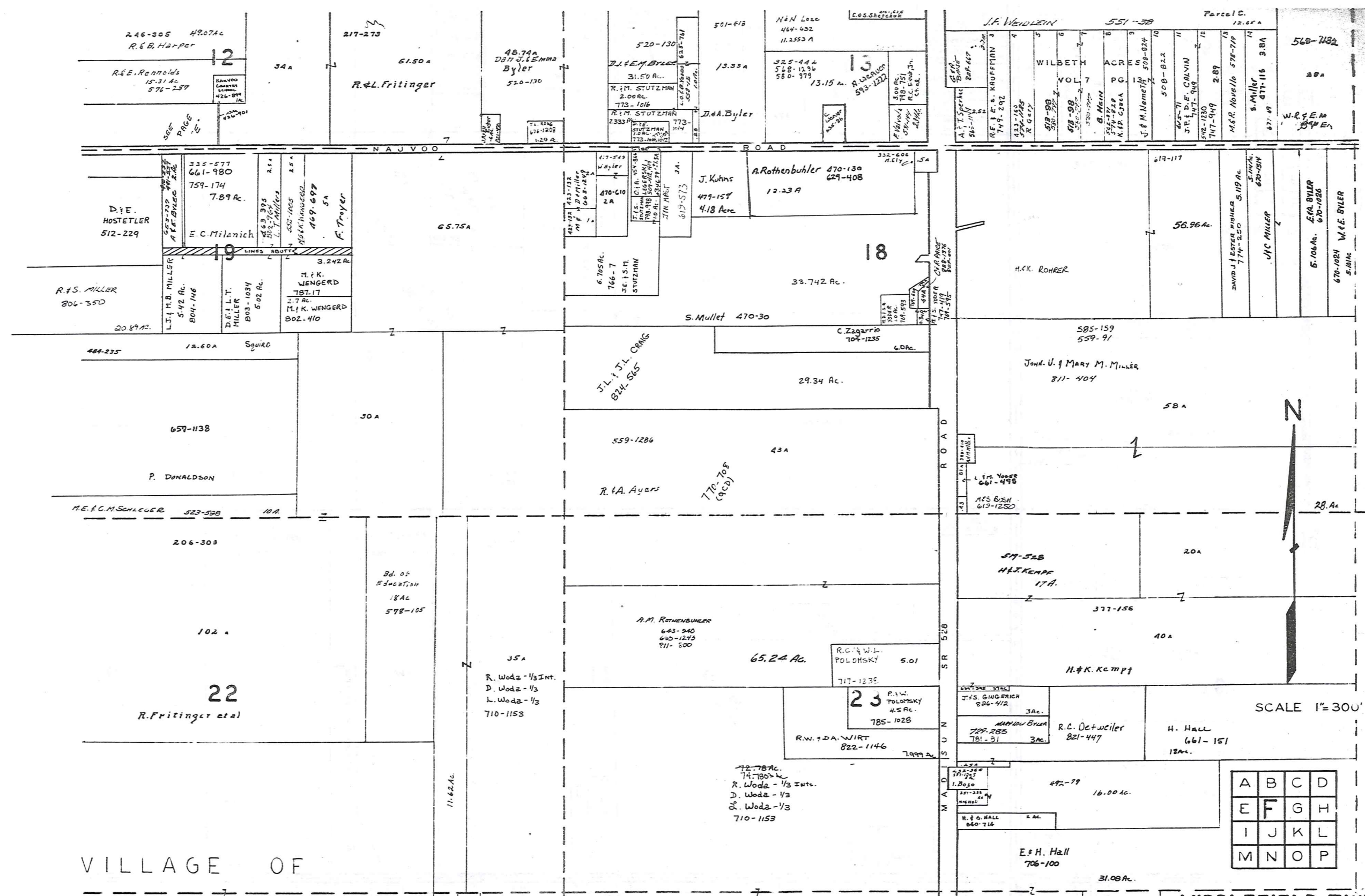
A	B	C	D
E	F	G	H
I	J	K	L
M	N	O	P

MIDDLEFIELD TWP

JANUARY 1, 1989
RELATIVE REPRESENTATION

MIDDLEFIELD

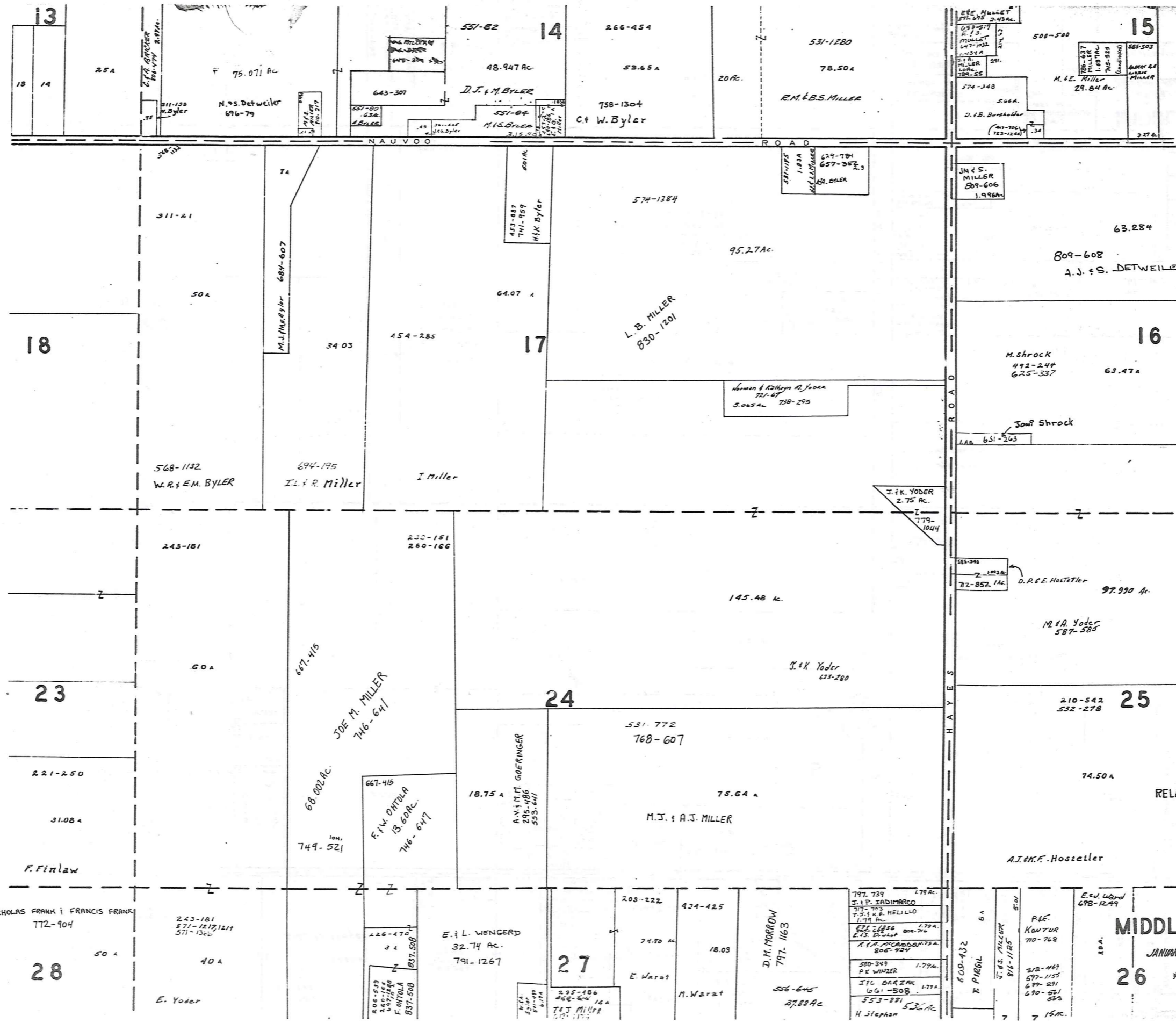
* Inadequate Description



VILLAGE OF
MIDDLEFIELD

MIDDLEFIELD TWP.
JANUARY 1, 1989
RELATIVE REPRESENTATION
50 A
NICHOLAS FRANK & FRANCIS FRANK
772-904
* Inadequate Description

A	B	C	D
E	F	G	H
I	J	K	L
M	N	O	P



SCALE 1"=300'

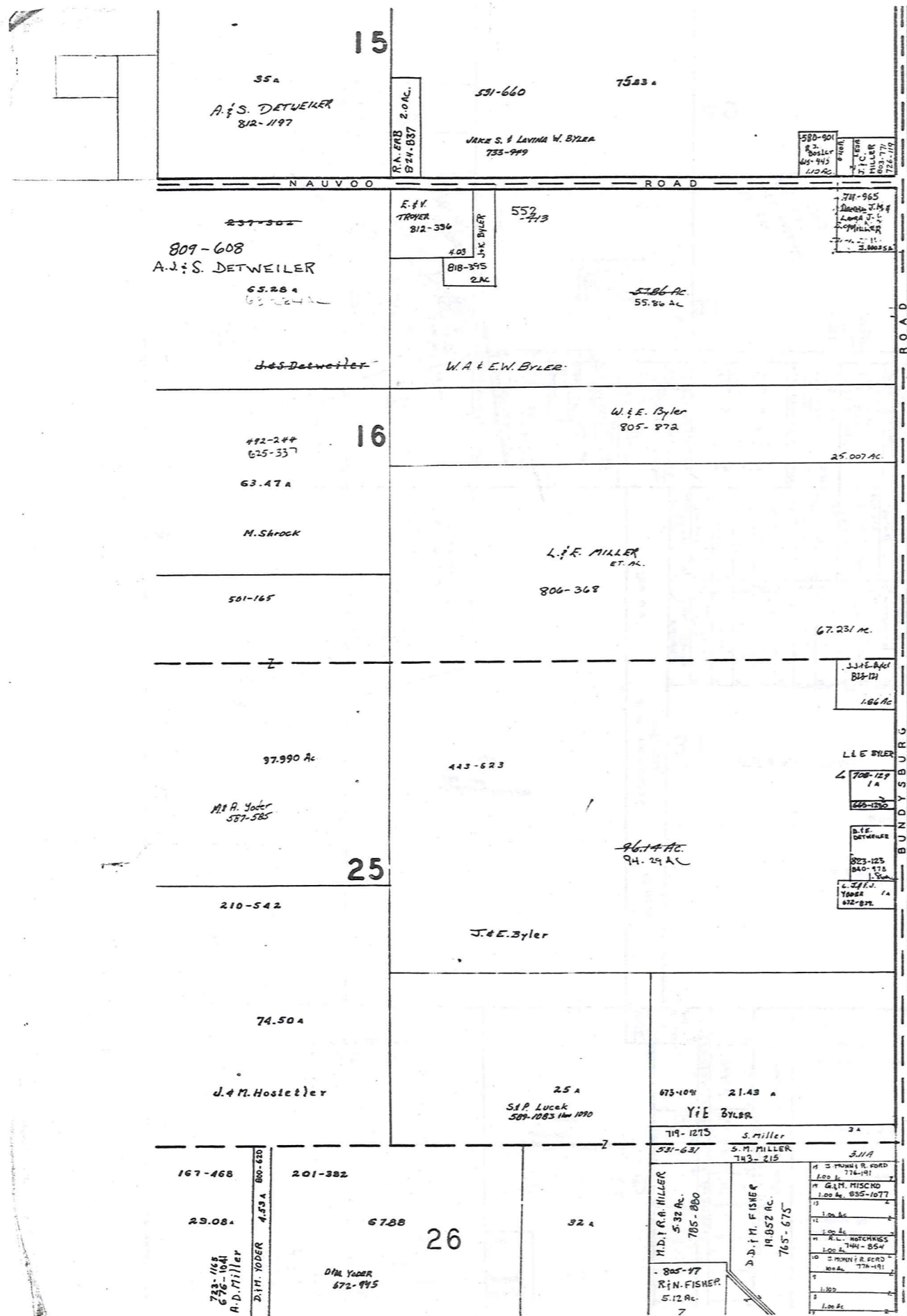
RELATIVE REPRESENTATION

A	B	C	D
E	F	G	H
I	J	K	L
M	N	O	P

MIDDLEFIELD TWP.

JANUARY 1, 1989

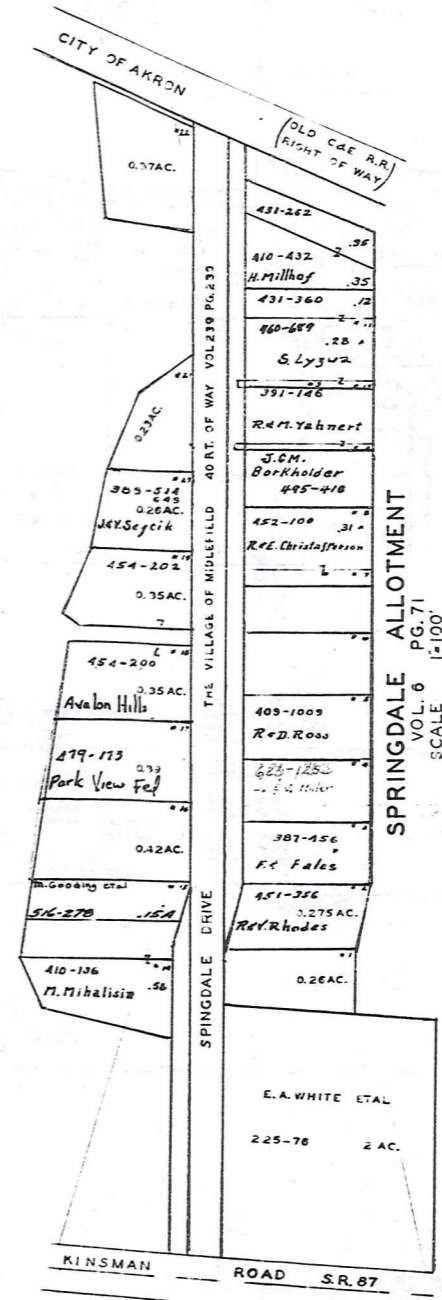
* Inadequate Description



T R U M B U L L C O U N T Y

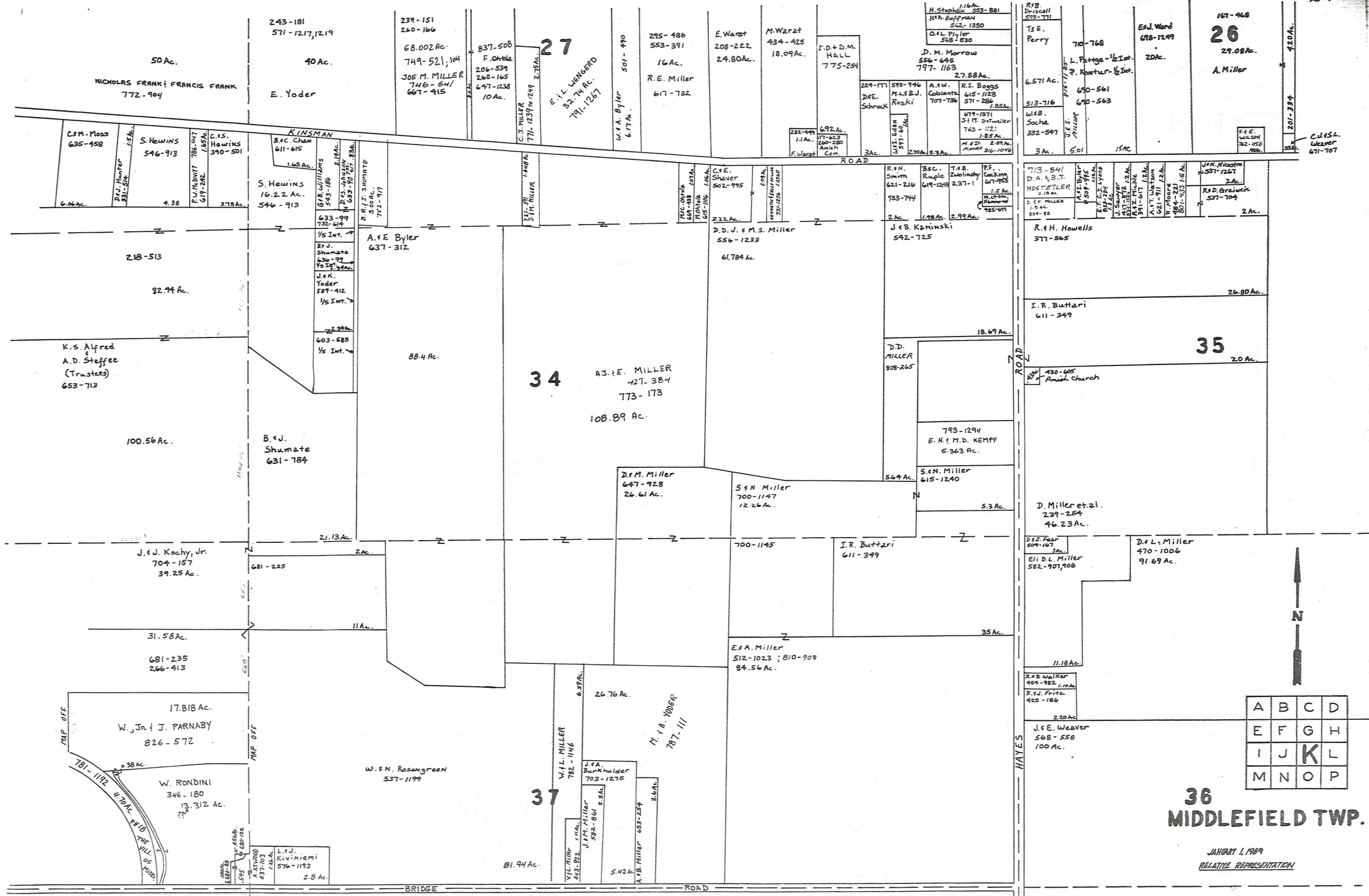
KINSMAN ROAD 87	
145-281	180-295
145-282	180-296
145-283	180-297
145-284	180-298
145-285	180-299
145-286	180-300
145-287	180-301
145-288	180-302
145-289	180-303
145-290	180-304
145-291	180-305
145-292	180-306
145-293	180-307
145-294	180-308
145-295	180-309
145-296	180-310
145-297	180-311
145-298	180-312
145-299	180-313
145-300	180-314
145-301	180-315
145-302	180-316
145-303	180-317
145-304	180-318
145-305	180-319
145-306	180-320
145-307	180-321
145-308	180-322
145-309	180-323
145-310	180-324
145-311	180-325
145-312	180-326
145-313	180-327
145-314	180-328
145-315	180-329
145-316	180-330
145-317	180-331
145-318	180-332
145-319	180-333
145-320	180-334
145-321	180-335
145-322	180-336
145-323	180-337
145-324	180-338
145-325	180-339
145-326	180-340
145-327	180-341
145-328	180-342
145-329	180-343
145-330	180-344
145-331	180-345
145-332	180-346
145-333	180-347
145-334	180-348
145-335	180-349
145-336	180-350
145-337	180-351
145-338	180-352
145-339	180-353
145-340	180-354
145-341	180-355
145-342	180-356
145-343	180-357
145-344	180-358
145-345	180-359
145-346	180-360
145-347	180-361
145-348	180-362
145-349	180-363
145-350	180-364
145-351	180-365
145-352	180-366
145-353	180-367
145-354	180-368
145-355	180-369
145-356	180-370
145-357	180-371
145-358	180-372
145-359	180-373
145-360	180-374
145-361	180-375
145-362	180-376
145-363	180-377
145-364	180-378
145-365	180-379
145-366	180-380
145-367	180-381
145-368	180-382
145-369	180-383
145-370	180-384
145-371	180-385
145-372	180-386
145-373	180-387
145-374	180-388
145-375	180-389
145-376	180-390
145-377	180-391
145-378	180-392
145-379	180-393
145-380	180-394
145-381	180-395
145-382	180-396
145-383	180-397
145-384	180-398
145-385	180-399
145-386	180-400
145-387	180-401
145-388	180-402
145-389	180-403
145-390	180-404
145-391	180-405
145-392	180-406
145-393	180-407
145-394	180-408
145-395	180-409
145-396	180-410
145-397	180-411
145-398	180-412
145-399	180-413
145-400	180-414
145-401	180-415
145-402	180-416
145-403	180-417
145-404	180-418
145-405	180-419
145-406	180-420
145-407	180-421
145-408	180-422
145-409	180-423
145-410	180-424
145-411	180-425
145-412	180-426
145-413	180-427
145-414	180-428
145-415	180-429
145-416	180-430
145-417	180-431
145-418	180-432
145-419	180-433
145-420	180-434
145-421	180-435
145-422	180-436
145-423	180-437
145-424	180-438
145-425	180-439
145-426	180-440
145-427	180-441
145-428	180-442
145-429	180-443
145-430	180-444
145-431	180-445
145-432	180-446
145-433	180-447
145-434	180-448
145-435	180-449
145-436	180-450
145-437	180-451
145-438	180-452
145-439	180-453
145-440	180-454
145-441	180-455
145-442	180-456
145-443	180-457
145-444	180-458
145-445	180-459
145-446	180-460
145-447	180-461
145-448	180-462
145-449	180-463
145-450	180-464
145-451	180-465
145-452	180-466
145-453	180-467
145-454	180-468
145-455	180-469
145-456	180-470
145-457	180-471
145-458	180-472
145-459	180-473
145-460	180-474
145-461	180-475
145-462	180-476
145-463	180-477
145-464	180-478
145-465	180-479
145-466	180-480
145-467	180-481
145-468	180-482
145-469	180-483
145-470	180-484
145-471	180-485
145-472	180-486
145-473	180-487
145-474	180-488
145-475	180-489
145-476	180-490
145-477	180-491
145-478	180-492
145-479	180-493
145-480	180-494
145-481	180-495
145-482	180-496
145-483	180-497
145-484	180-498
145-485	180-499
145-486	180-500

315-363 Agreement of Restriction
CRESTWOOD SUB. DIV.
VOL. 6 PG 77
LOT 30
SCALE 1"=200'



A	B	C	D
E	F	G	H
I	J	K	L
M	N	O	P

MIDDLEFIELD TWP.
RELATIVE REPRESENTATION



167-468
26
 29.08 Ac.
 A. Miller

34
 A.J. MILLER
 427-384
 773-173
 108.89 Ac.

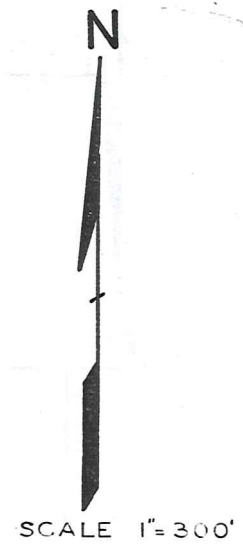
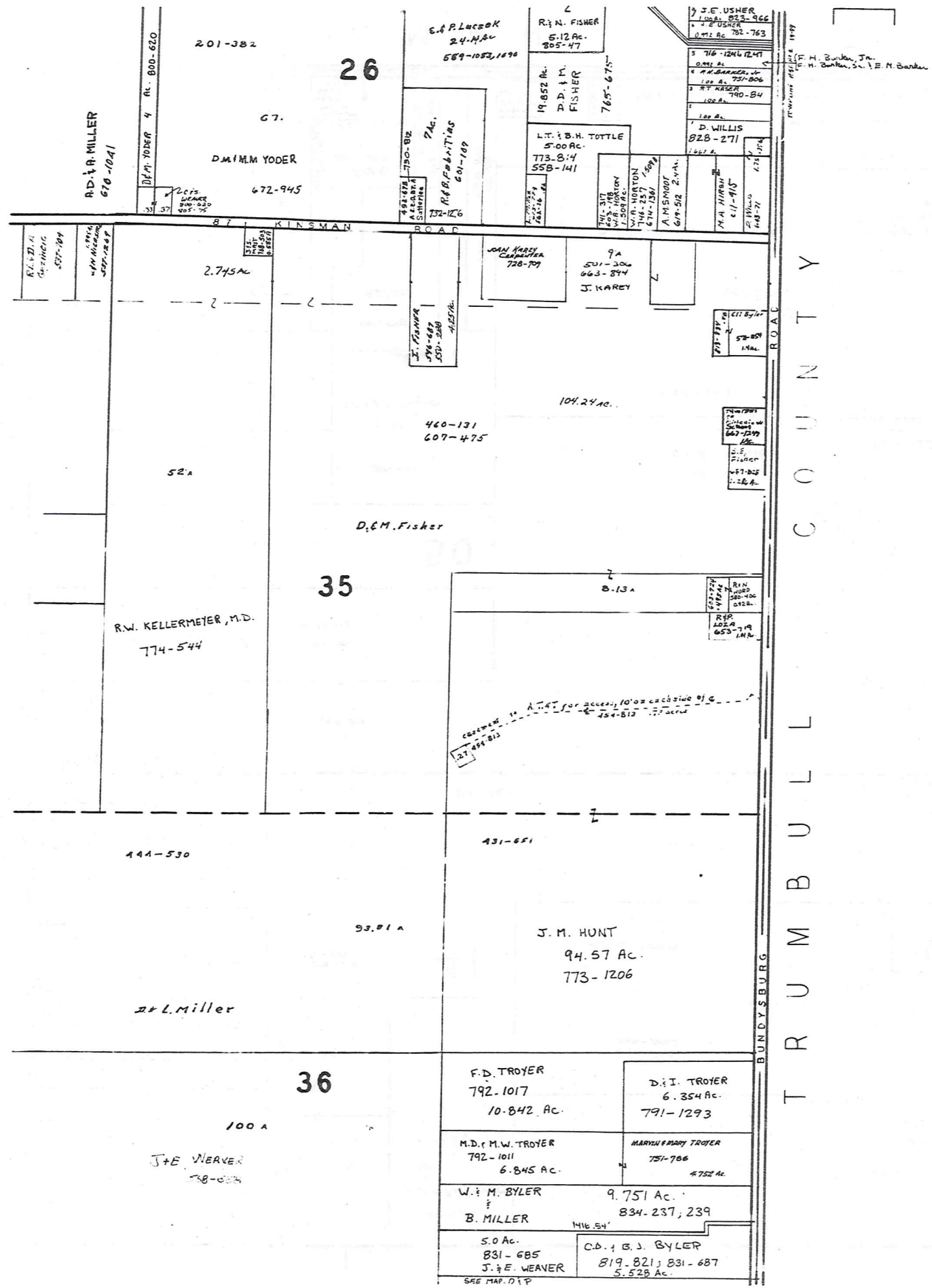
35
 20 Ac.

36
 MIDDLEFIELD TWP.

A	B	C	D
E	F	G	H
I	J	K	L
M	N	O	P

JANUARY 1, 1989
 RELATIVE REPRESENTATION

* Inadequate description

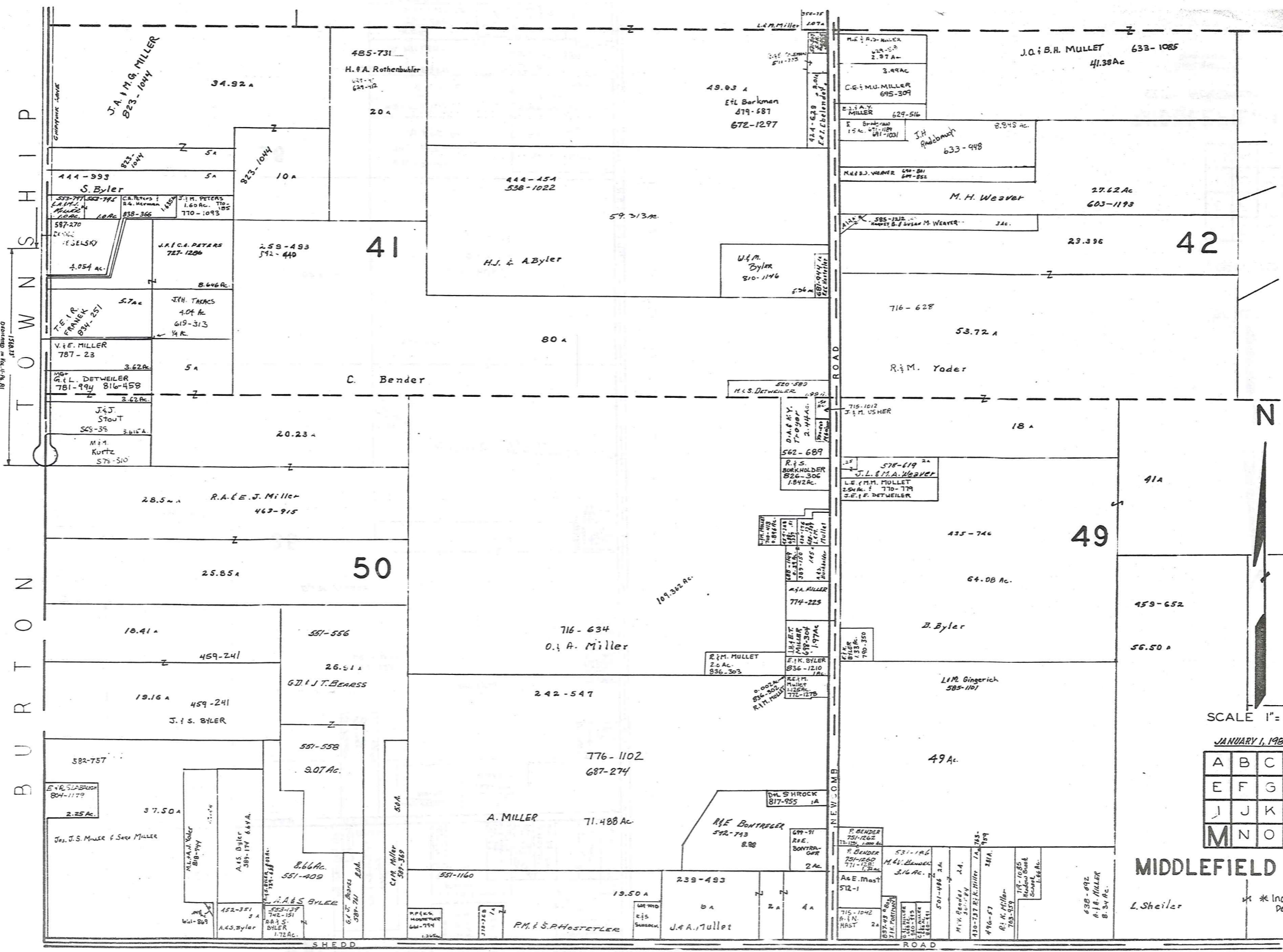


JANUARY 1, 1929

A	B	C	D
E	F	G	H
I	J	K	L
M	N	O	P

MIDDLEFIELD TWP.
RELATIVE REPRESENTATION

* Inadequate Description



BURTON TOWNSHIP
 1580 ft
 Distance in feet to R. 18

SCALE 1" = 300'

JANUARY 1, 1989

A	B	C	D
E	F	G	H
J	K	L	
M	N	O	P

MIDDLEFIELD TWP.

L. Sheiler

* Inadequate Description

P A R K M A N T O W N S H I P

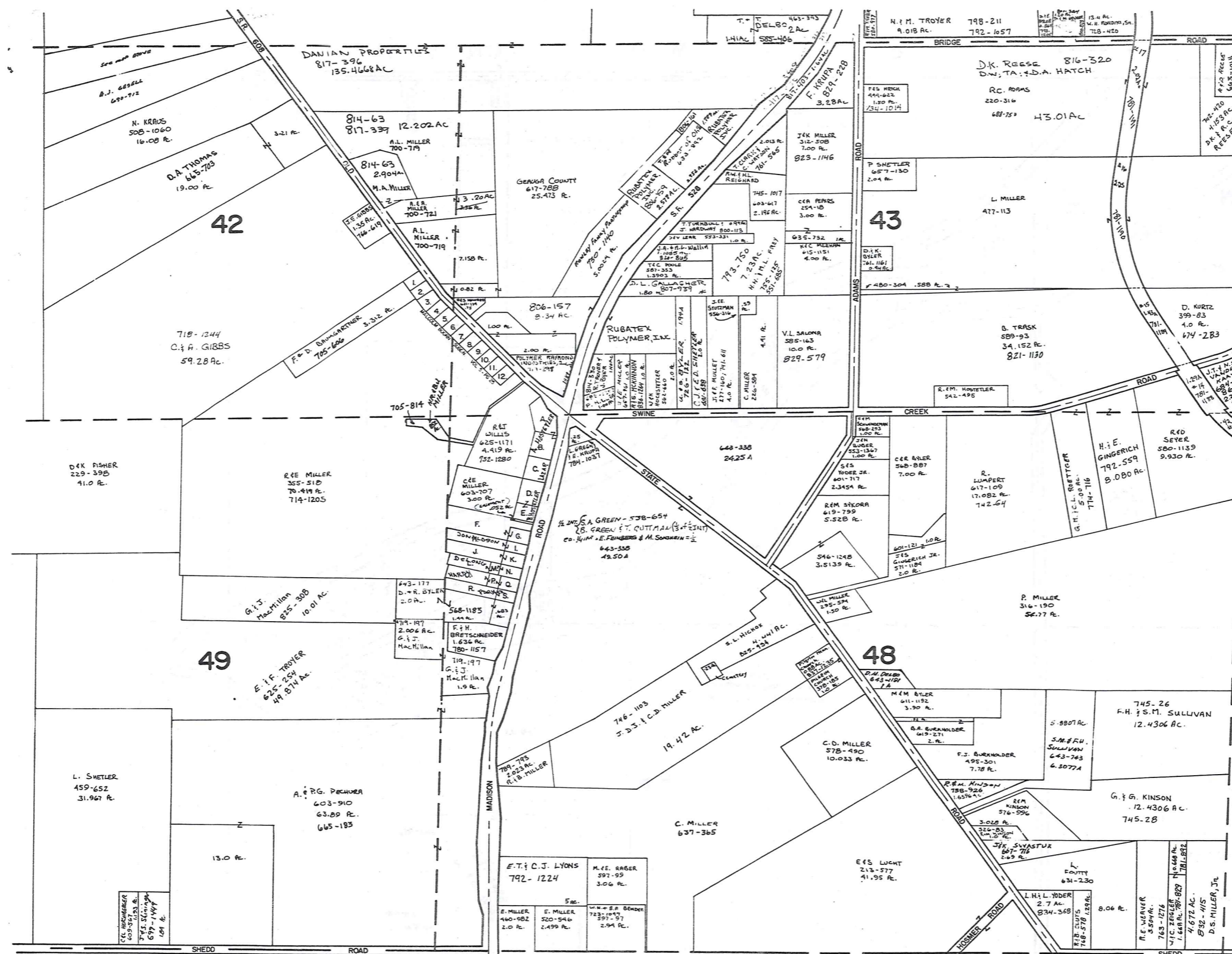
RELATIVE REPRESENTATION

MALCOLM BOORN SUBDIV. V. 5-P. 25

1	D.M. BOORN	705-1001	1.00
2	D.M. BOORN	495-497	1.00
3	D.M. BOORN	505-504	1.00
4	D.M. BOORN	444-519	1.00
5	D.M. BOORN	709-417	1.00
6	D.M. BOORN	446-655	1.00
7	D.M. BOORN	546-1389	1.00
8	D.M. BOORN	546-1389	1.00
9	D.M. BOORN	570-223	1.00
10	D.M. BOORN	670-1201	1.00
11	D.M. BOORN	774-147	1.00
12	D.M. BOORN	774-147	1.00

PROPERTIES ALONG S. R. 528

A	R. L. HOSTETLER	715-1113	1.00
B	R. L. HOSTETLER	715-1113	1.00
C	J. C. LARAR	595-85	1.00
D	B. B. HOSTETLER JR.	509-1169	1.00
E	B. B. HOSTETLER JR.	509-1174	1.00
F	J. A. LAUGHERY	829-185	1.00
G	J. A. LAUGHERY	829-185	1.00
H	J. DONALDSON	637-1001	1.00
I	J. DONALDSON	637-1001	1.00
J	R. J. ROSS	838-1025	1.00
K	R. J. ROSS	838-1025	1.00
L	R. DEWING	478-99	1.00
M	R. DEWING	478-99	1.00
N	R. DEWING	478-99	1.00
O	D. S. WARDY	625-1278	1.00
P	D. S. WARDY	625-1278	1.00
Q	D. S. WARDY	625-1278	1.00
R	R. J. PARKER	351-147	1.00
S	R. J. PARKER	351-147	1.00



* Inadequate description

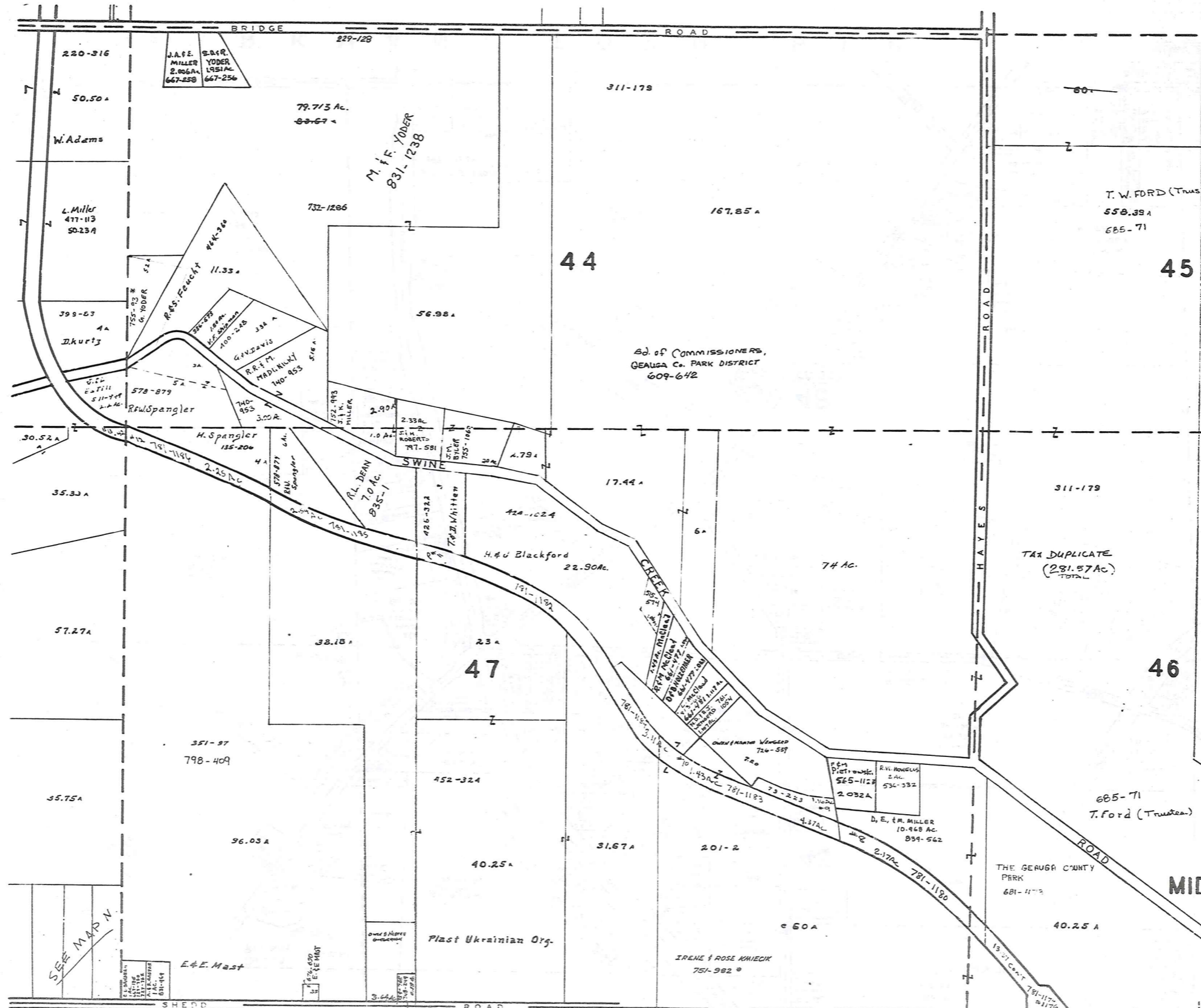
SCALE 1"=300'

JANUARY 1, 1989

A	B	C	D
E	F	G	H
I	J	K	L
M	N	O	P

MIDDLEFIELD TWP. "N"
RELATIVE REPRESENTATION

P A R K M A N T O W N S H I P



SCALE 1"=300'

A	B	C	D
E	F	G	H
I	J	K	L
M	N	O	P

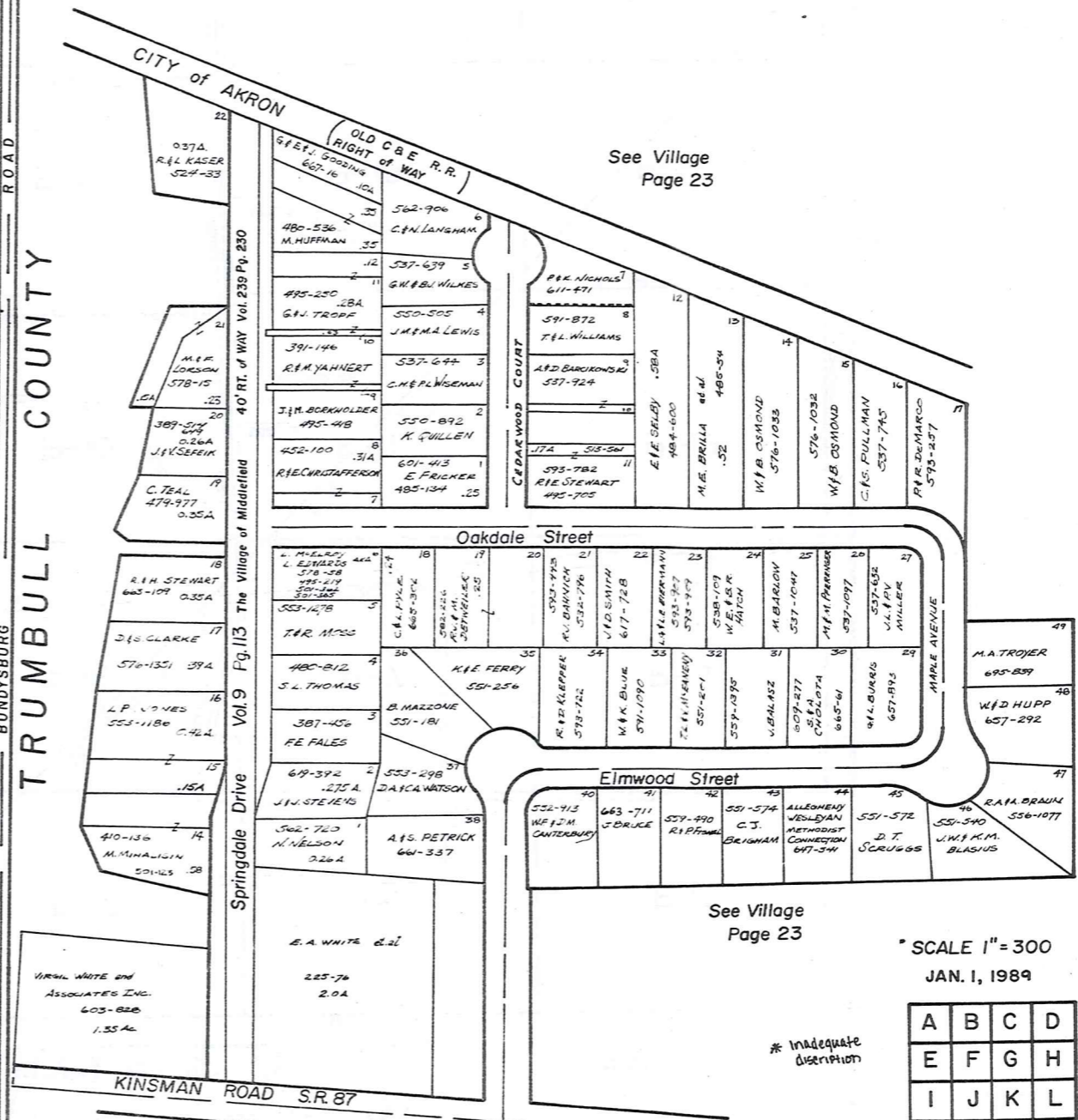
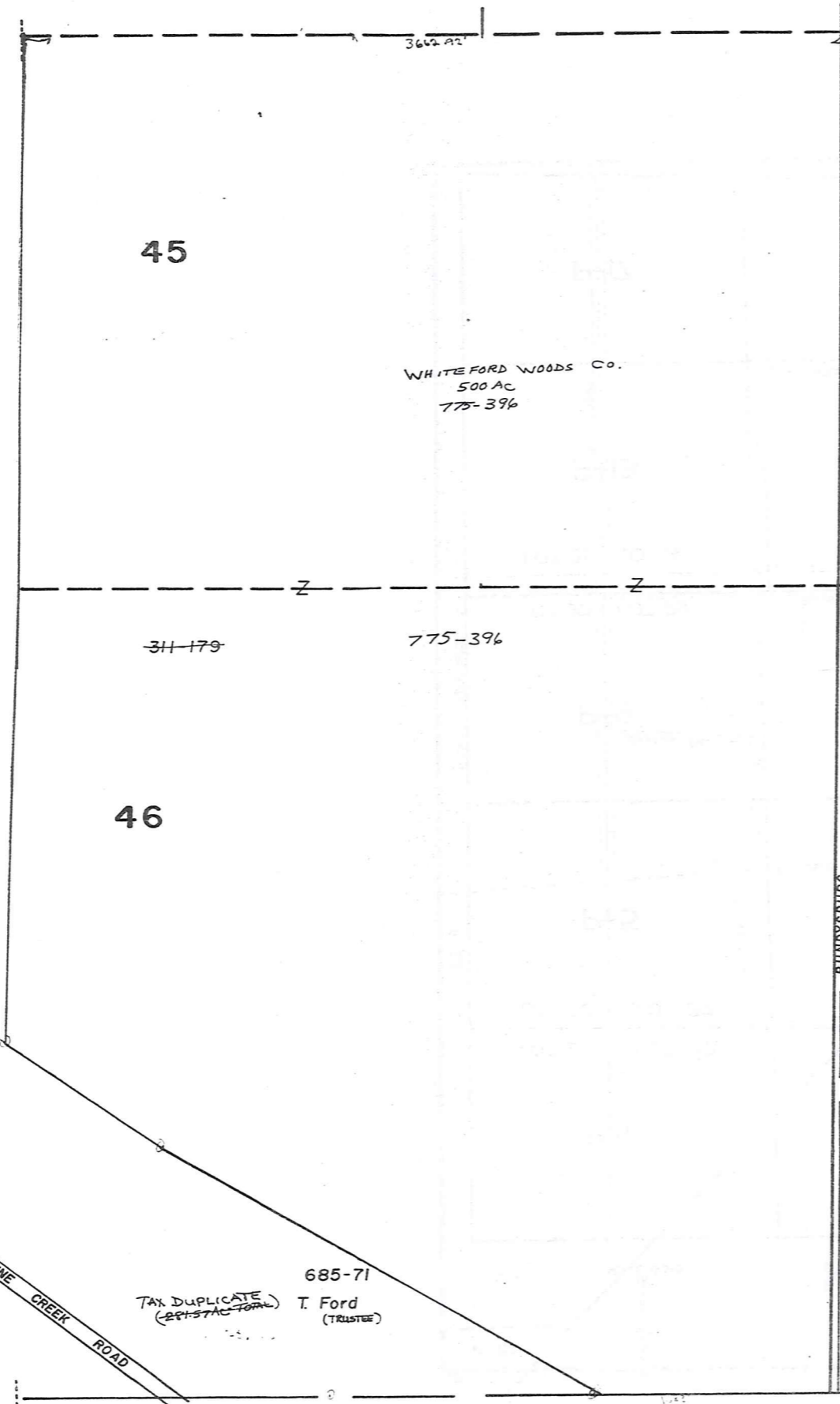
MIDDLEFIELD TWP.

JANUARY 1, 1989
RELATIVE REPRESENTATION

P A R K M A N T O W N S H I P

* Does Not Meet Standards

* Inadequate description



See Village Page 23

SCALE 1" = 300
JAN. 1, 1989

* Inadequate description

A	B	C	D
E	F	G	H
I	J	K	L
M	N	O	P

MIDDLEFIELD TWP.
RELATIVE REPRESENTATION

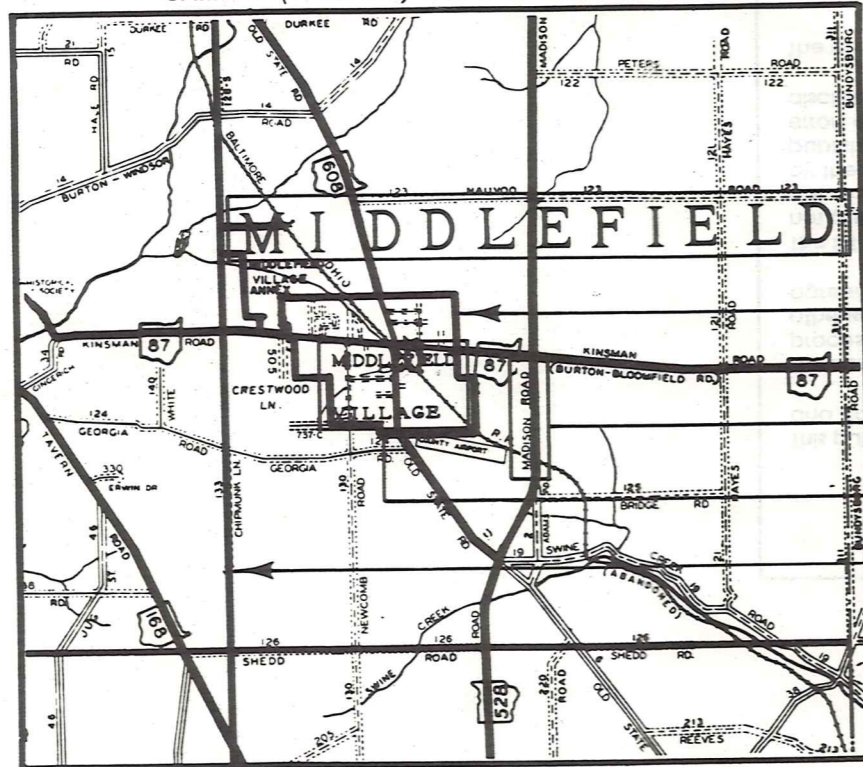
275

© ONLY THE MAP

Explanation and Use Sheet for Geauga County, Ohio

A

SAMPLE (PARTIAL) COUNTY INDEX MAP



Tract Lot Number

Acreage

Township Name

Village Boundary

Street Name

Village Name

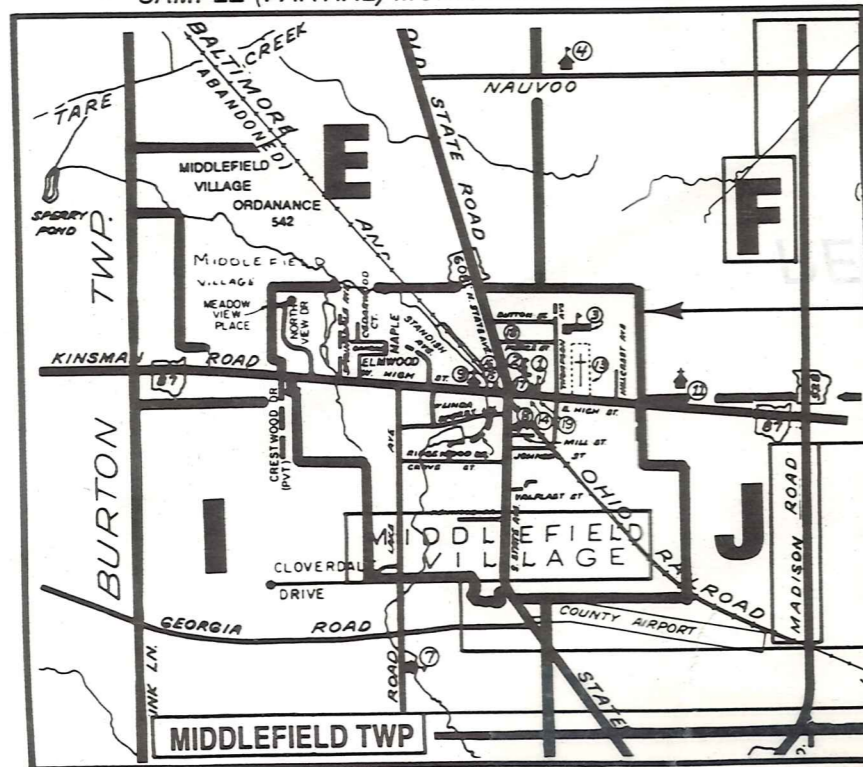
Township Boundary

Owners Name

Denotes Continuous Ownership

Deed Book & Page

SAMPLE (PARTIAL) MUNICIPALITY INDEX MAP



Map Page Number

Township Name

Village Name

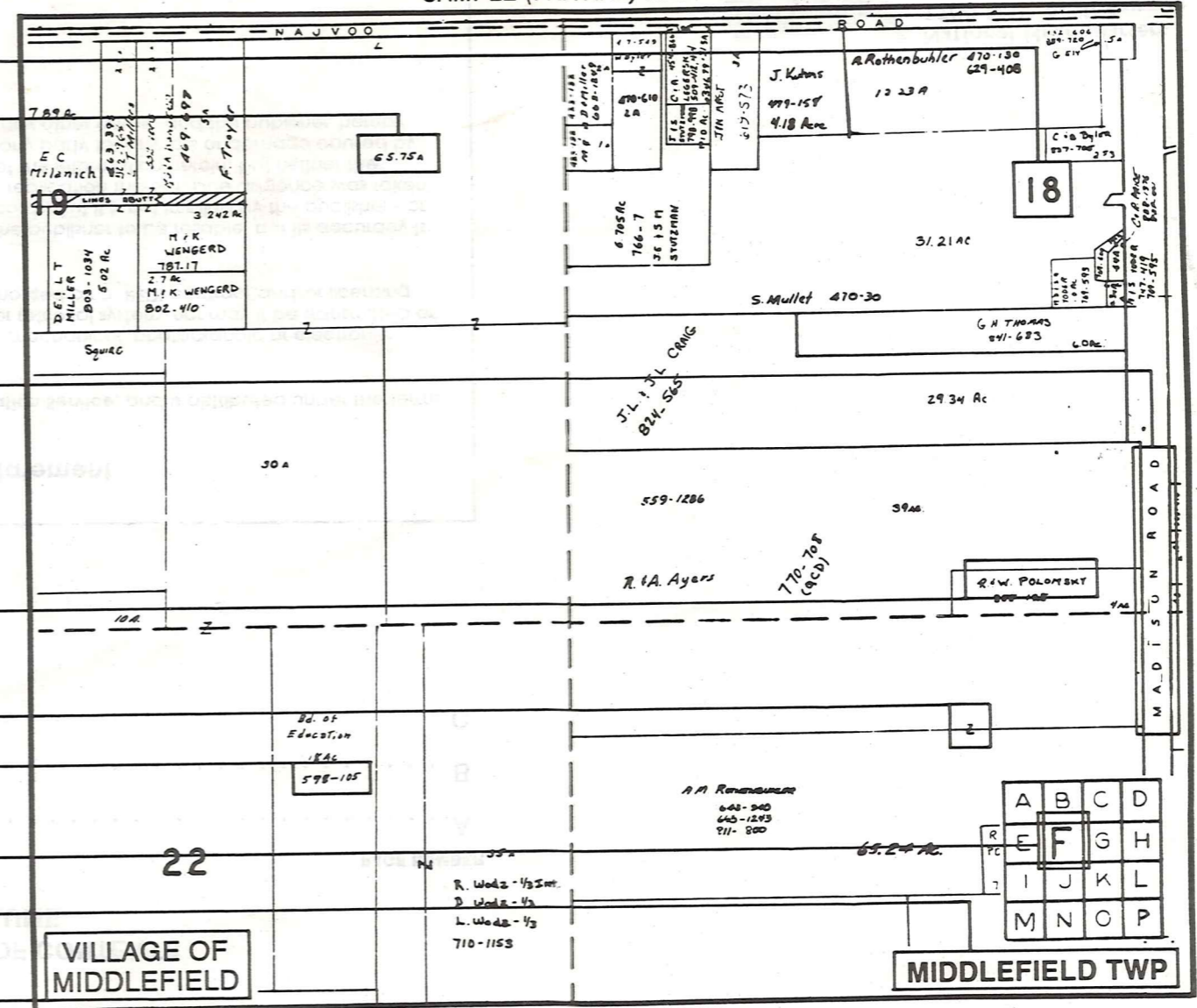
Village Boundary

Street Name

Village Name

Township Name

SAMPLE (PARTIAL) MAP PAGE



USE OF THE MAP VOLUME

- LOCATE THE GENERAL AREA OF INTEREST ON THE COUNTY INDEX MAP AND NOTE THE MUNICIPALITY NAME (TOWNSHIP OR VILLAGE).
 - REFER TO THE TABLE OF CONTENTS AND NOTE THE BEGINNING ATLAS PAGE NUMBER FOR THE MUNICIPALITY OF INTEREST.
 - TURN TO THE PAGE INDICATED, ON THIS PAGE WILL APPEAR AN INDEX MAP FOR THAT MUNICIPALITY.
 - LOCATE THE GENERAL AREA OF INTEREST AND NOTE THE MAP PAGE NUMBER. THIS MAY BE EITHER A LETTER OR A NUMBER.
 - MAP PAGES ARE IN ALPHABETICAL (OR NUMERICAL) SEQUENCE FOLLOWING THE MUNICIPALITY INDEX MAP. FOLLOW SEQUENCE TO THE MAP PAGE INDICATED.
 - LOCATE SPECIFIC PARCEL OF INTEREST AND NOTE THE DESIRED INFORMATION.
- NOTE: ON SOME MAPS YOU MAY BE REFERRED TO A DETAIL SHEET SHOWING AN ENLARGEMENT OF THE AREA. THESE MAPS ARE FOUND AT THE END OF THE REGULAR MAP PAGES IN EACH MUNICIPALITY IN EITHER ALPHABETICAL OR NUMERICAL SEQUENCE.
- NOTE: CHARDON VILLAGE HAS TITLE SHEETS. TO LOCATE OWNERS NAME, NOTE THE PARCEL NUMBER, REFER TO THE TITLE PAGE FOLLOWING THE MAP OF INTEREST, FOLLOW NUMERICAL SEQUENCE TO THE PARCEL NUMBER OF INTEREST AND NOTE THE DESIRED INFORMATION. IN ALL OTHER MUNICIPALITIES THE OWNERS NAME APPEARS ON THE MAP PAGE.